

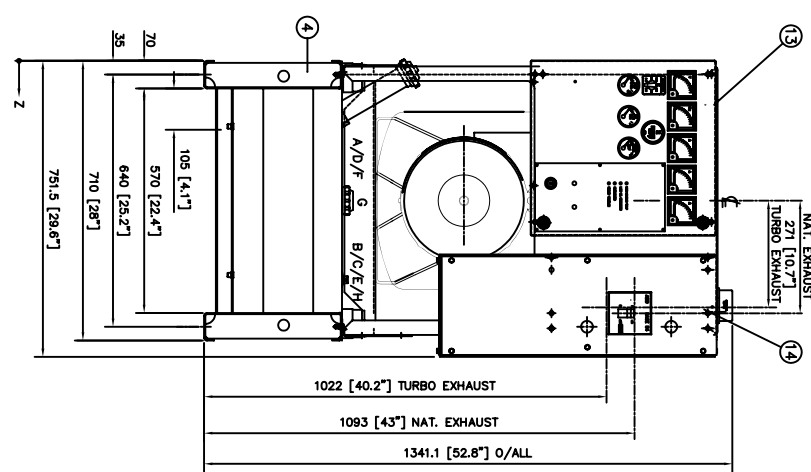
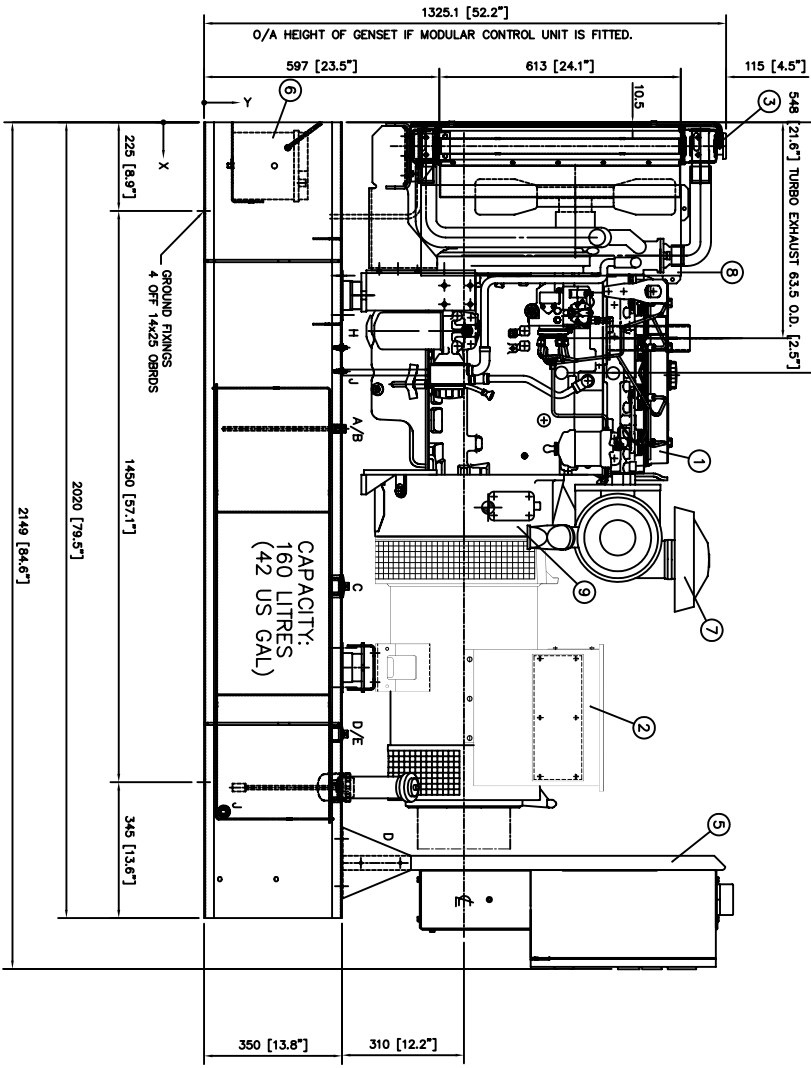
ITEM QTY.	DESCRIPTION	DIM X	DIM Y	DIM Z
A 1	3/8" BSP SOCKET	778	350	185
B 1	3/8" BSP SOCKET	778	350	555
C 1	1" BSP SOCKET	1178	350	555
D 1	1" BSP SOCKET	1553	350	155
E 1	1 1/2" BSP SOCKET	1553	350	555
F 1	2" BSP SOCKET	1698	350	155
G 1	1 1/2" BSP SOCKET	1698	350	355
H 1	1" BSP SOCKET	1698	350	555
J 1	3/4" BSP SOCKET	1750	50	67

TANKBASE FITTINGS

GENSET	WEIGHT (kg)	CENTRE OF GRAVITY
(WITH OIL)	(WITH OIL & WATER)	DIM X DIM Y DIM Z
ENGINE/ALTERNATOR		
1004G/L1014S	755	842 721
1004G/L12014B	810	830 876 721
1004G/L12014C	820	840 882 721
1004G/L12014D	830	850 888 721
1004G/L12014H	880	900 924 721
1004G/L12014J	920	940 952 721
1004T02/L12014C	820	840 894 721
1004T02/L12014D	830	850 900 721
1004T02/L12014H	880	900 936 721
1004T02/L12014J	920	940 953 721
1004T02/L13014B	985	1005 988 721
1004K0P/L12014B	840	860 898 721
1004K0P/L12014D	880	890 910 721
1004K0P/L12014H	910	930 944 721
1004-407/L12014D	863	883 905 721
1004-407/L12014H	913	933 939 721
1004-407/L12014J	953	973 965 721
1004-407M/L12014J	957	977 960 721
1004-407M/L13014B	1022	1042 985 721

NOTE: WEIGHTS AND C.G. TO BE CONFIRMED

ITEM QTY.	DESCRIPTION	DWG./PART No.	ITEM QTY.	DESCRIPTION	DWG./PART No.
15	1 LVI - LUBE OIL DRAIN ASSY.	MSS2880	1	ENGINE	MSS3873
16	1 W1 - COOLANT DRAIN ASSY.	MSS2917	2	ALTERNATOR	MSS3873
17a	1 DECAL ARR. - (Universal Label)	MSS3055	3	RADIATOR ASSEMBLY	MSS3448
17b	1 DECAL ARR. - (B & W Label)	MSS3062	4	BASERFRAME ASSY	MSS3501
18a	1 DECAL ARR. - (Oily Label)	MSS3064	5	PANEL STAND ASSY. (IF FITTED)	MSS3449
18b	1 DECAL ARR. - (OMA Label)	MSS3084	6	BATTERY TRAY ASSEMBLY	MSS2484
19a	1 CEC GUARDS 1004G	MSS3691	7	AIR FILTER ASSEMBLY	MSS3687
19b	1 CEC GUARDS 1004T02	MSS2912	8	SPLIT FAN GUARD ASSEMBLY	MSS3311
* - NOT SHOWN					
9	1 COUPLING ARRANGEMENT	MSS2930	10	FUEL LINE ARRANGEMENT	MSS2930
11	1 ENGINE INTERFACE MODULE UPFIT	MSS2414	11	ENGINE INTERFACE MODULE UPFIT	MSS2414
12	1 SENDERS & SENSORS UPFIT	MSS4428	12	SENDERS & SENSORS UPFIT	MSS4428
13	1 CONTROL PANEL (IF FITTED)	-	13	CONTROL PANEL (IF FITTED)	-
14	1 CIRCUIT BREAKER (IF FITTED)	-	14	CIRCUIT BREAKER (IF FITTED)	-



NOTE: ALL DIMENSIONS ARE IN MM & [INCHES]

ITEM QTY.	DESCRIPTION	REV/DATE	BY	DATE
F	MODULAR CONTROL UNIT AND REFERENCES REVISED	20/02/00	C.H.	23/07/02
E	ALTERNATOR L12014C ADDED	20/02/00	M.P.	29/02/01
D	EXTEND O/A LENGTH OF BASE BY 70MM	06/09/00	V.S./M	20/09/00
C	DWG./PART NUMBER & WAS MODIFIED	07/07/00	C.H.	27/2/00
B	CENTRE OF GRAVITY DETAILS ADDED	21/4/00	C.H.	21/4/00
A	FIRST ISSUE	30/3/00	C.H.	30/3/00

REV/DATE	BY	DATE	DESCRIPTION
1	2	3	4

ORIG. BY	C. HOLMES
DATE	30/03/00
APPD. BY	<i>[Signature]</i>
DATE	01/11/2004

TITLE	PERKINS 1004 WITH LEROY L1000/L1200/L1300 OPEN GENSETS WITH NON-UL LISTED BASE/TANK
SHEET	A1
SCALE	1:7
DRAWING NO.	MCA5380
ISSUE	J